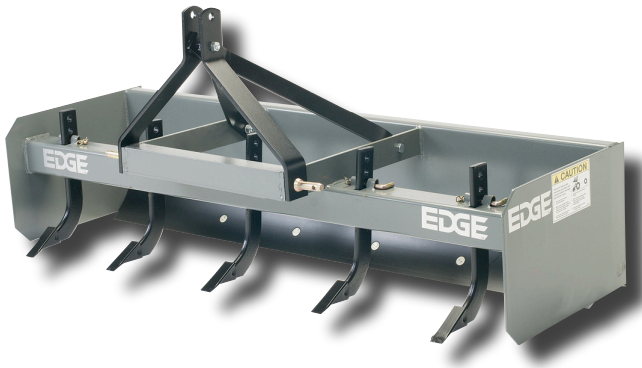


Box Scraper Standard Duty



The ideal attachment for finish grading, leveling and back filling. All models feature 1/2" x 6" reversible cutting edges front and rear, replaceable scarifier teeth and formed moldboards. The heat-treated steel scarifier shanks are height-adjustable.

SPECIFICATIONS

Model	Weight (lbs/kg)	Overall Width (in/ mm)	No. of Teeth	HP Req.
BS60	376/170.6	60/1524	4	20-25
BS72	454/205.9	72/1829	5	25-40
BS84	530/240.4	84/2133	6	30-40
BS48	298/135.2	48/1524		