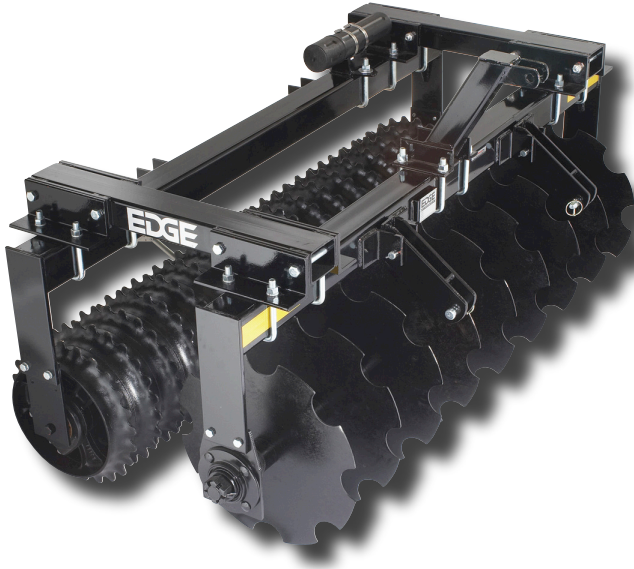


Mulch Tucker



The Mulch Tucker is an ideal tool for the operator who needs to anchor mulch over new seeding. The tucker blades push the hay or straw mulch into the soil on newly seeded areas. Requires a minimum of 30 hp.

SPECIFICATIONS

Model	Weight (lbs/kg)	Overall Width (in/mm)	Height (in/mm)	Working Width (in/mm)
MT72	1340.0/607.8	80/2032	41/1041	72/1828