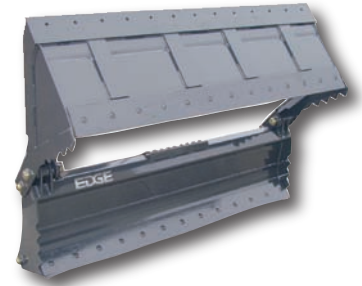


4-in-1 Combination Buckets



Though they may be designed for different applications, speciality buckets from CEA have at least three things in common: they're tough, attach easily and allow your compact equipment to take advantage of its power and mobility for a very particular job.



The multi-tasking 4-in-1 Bucket keeps your skid steer productive and profitable. Use one bucket for a wide variety of applications, such as site cleanup, grading, scraping, grappling, dozing dirt, brush removal, material spreading and more. High strength steel clam shell bottom is shaped to prevent bowing of heavy material and two large, guarded cylinders provide powerful clamping. Sizes range from 60" (1524 mm) to 84" (2134 mm), and standard, heavy-duty and heavy-duty with teeth models are available. Heavy-duty buckets feature reinforcement plates and a holding valve to keep clam in locked position. All 4-in-1 buckets come standard with 3/4"x6" weld on cutting edges with holes, as well as bolt on cutting edges for front dozer edge and rear of the clam edge. An optional cutting edge or serrated edge is available for the front bucket. All units come complete with hoses and flat face couplers.

- ⊙ MULTI-PURPOSE BUCKET FOR GRADING, GRAPPLING, SCRAPING, DOZING, MATERIAL SPREADING, & MORE
- ⊙ HIGH STRENGTH STEEL CLAM SHELL PREVENTS BOWING OF BUCKET
- ⊙ BOLT ON EDGES FOR ADDED DURABILITY IN RUGGED APPLICATIONS
- ⊙ TWO SLEEVED AND PROTECTED HEAVY-DUTY CYLINDERS FOR POWERFUL CLAMPING
- ⊙ STANDARD, HEAVY-DUTY AND HEAVY-DUTY WITH TEETH MODELS AVAILABLE

SPECIFICATIONS

Model	Weight (lbs/kg)	Overall Width (in/mm)	Inside Width (in/mm)	Depth (in/mm)	Height (in/mm)	Heaped Cap. (ft ³ /m ³)
CBS60	840/381.0	61.5/1562	60/1524	36.3/922	21.3/541	13.8/.39
CBS66	915/415.0	67.5/1715	66/1676			15.2/.43
CBS72	960/435.5	73.5/1867	72/1828			16.6/.47
CBH66	1050/476.3	67.5/1715	66/1676			15.2/.43
CBH72	1105/501.2	73.5/1867	72/1829			16.6/.47
CBH78	1224/555.2	79.5/2019	78/1981			18/.51
CBH84	1285/582.9	85.5/2172	84/2134			19.3/.55