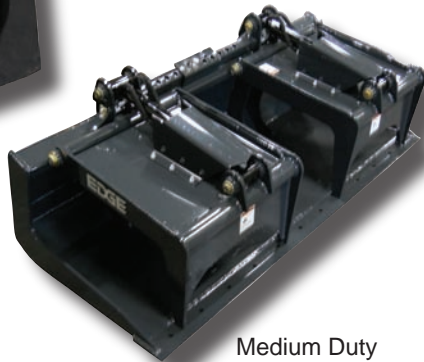


# Grapple Buckets



Standard Duty



Medium Duty



Heavy Duty



Handling brush, awkward debris, logs and more is made easy with the right grapple. The experts at CEA can help you to select the correct grapple based on your skid steer loader and your application.

Move heavy, hard-to-handle materials on the construction site or anywhere you need to! Grapple buckets are available in widths from 60" (1524 mm) to 94" (2388 mm).

They feature independently operating grapple arms for powerful clamping on uneven loads. EDGE Grapple Buckets feature enclosed cylinders and hoses to protect against debris and come complete with hoses and flat face couplers.

- ⊙ **STEEL COVERS PROTECT HYDRAULIC CYLINDERS**
- ⊙ **INDEPENDENTLY OPERATING GRAPPLES HANDLE UNEVEN LOADS**

## SPECIFICATIONS

Model	Duty	Height (in/mm)	Overall Width (in/mm)	Depth (in/mm)	Grapple Opening (in/mm)	Weight (lbs/kg)
GB60	Standard	20.5/521	60/1524	31.5/800	51/1295	793/360
GB66			66/1727			847/384
GB72			72/1828			940/426
GB78			78/1981			978/444
IGB72	Medium	22.5/571	73.5/1866	35.5/902	40/1016	1100/499
IGB78			79.5/2019			1140/517
IGB84			85.5/2171			1200/544
IGB90			91.5/2324			1260/572
HDGB74	Heavy	19/483	74/1879	37.84/961	45.36/1152	1279/580
HDGB88			88/2235			1377/625
HDGB83			83/2108			1465/665
HDGB94		21.8/554	94/2388			37.3/947