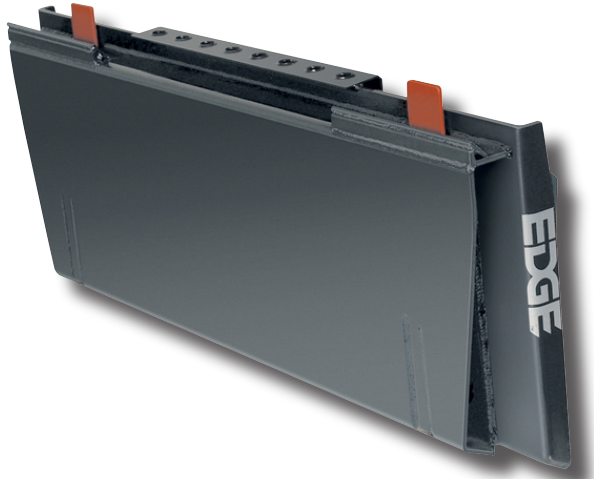


# Hydraulic Quick Attach



It's amazing what you can do with the right adapter! Choose the one that fits your skid steer and adapts to the attachments that you want to use. Whether it's an old attachment on a new skid steer, or vice versa, you can put all of your attachments to work! You can even use some of your three-point hitch tractor attachments on your skid steer.

The Hydraulic Quick Attach is designed to couple or uncouple your attachment without the need to leave the comfort of the cab! The hydraulic quick attach adapter is fast, safe and easy to use. It works off standard auxiliary hydraulics, and requires a hydraulic adapter when using it with powered attachments. Down-pressure springs assure a locked position, and flag indicators notify the operator when the adapter is in the unlocked position. The totally enclosed unit is protected from dirt, debris and other contaminants, and few moving parts means less maintenance. Save time, increase productivity and profits with the hydraulic quick attach adapter!

- ⊙ **ADDS ONLY 2.75" BETWEEN LOADER AND ATTACHMENT**
- ⊙ **DOWN PRESSURE SPRINGS ASSURE LOCKED POSITION FOR SAFETY**
- ⊙ **CHANGE ATTACHMENTS RIGHT FROM THE CAB**

## SPECIFICATIONS

| Model  | Weight (lbs/kg) | HP Req. | Cylinder Size(s)<br>(in/mm) | Length (in/mm) | Height (in/mm) | Depth (in/mm) |
|--------|-----------------|---------|-----------------------------|----------------|----------------|---------------|
| HQASSL | 220/99.8        | 65+     | 1.5x2.125/38x54             | 45.5/1156      | 18.5/470       | 5/127         |